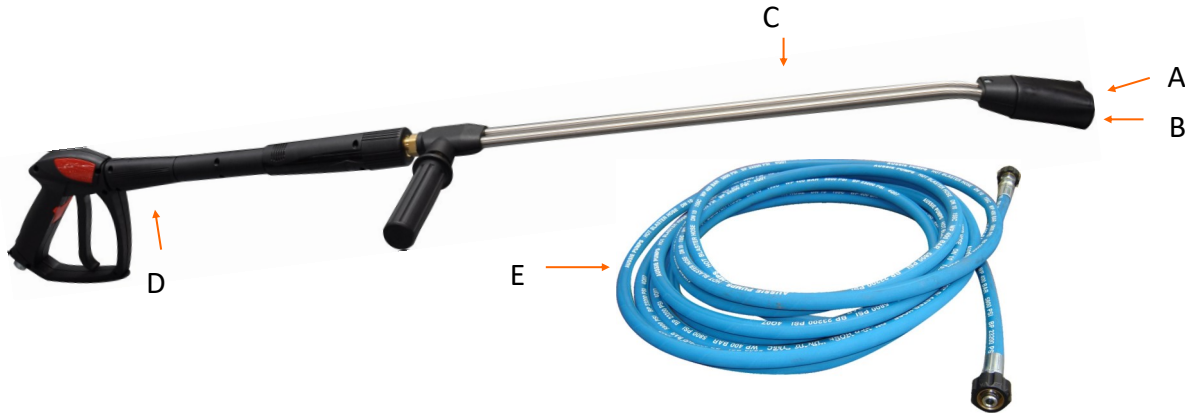
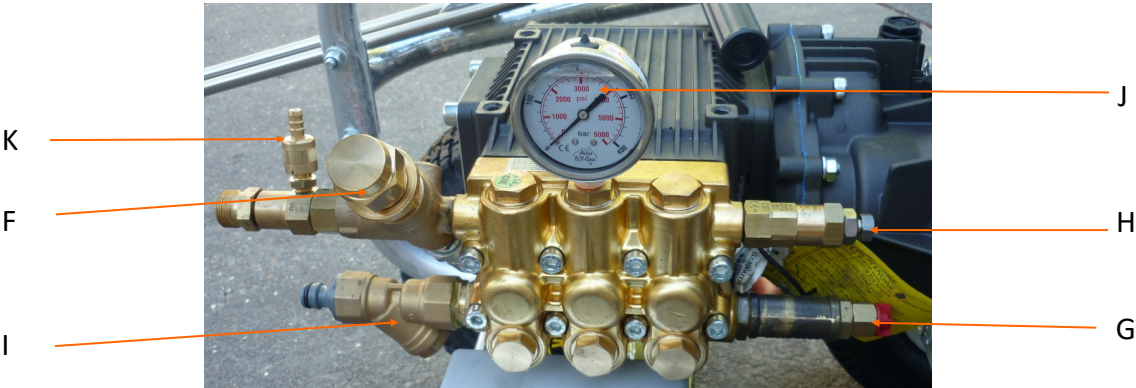
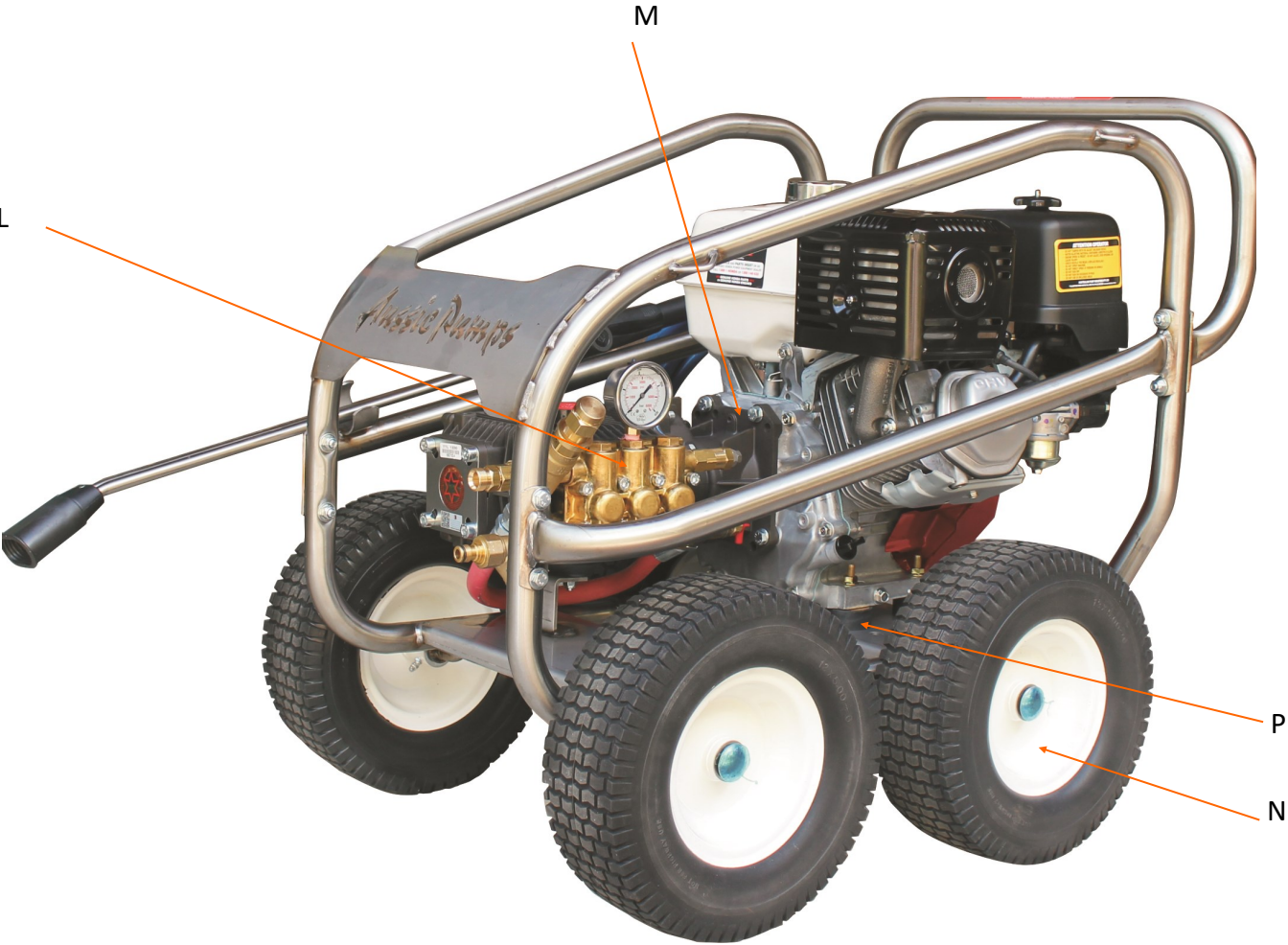


PARTS IDENTIFICATION



REPLACEMENT PARTS

Position	Part No	Description	SCUD Series				400 Yanmar	NEW Ultra A	NEW Predator A
			100	350	351	400			
Nozzles									
A	C915030M	HP NOZZLE (15°ANGLE, TIP SIZE 30)					X		
	C915045M	HP NOZZLE (15°ANGLE, TIP SIZE 45)		X					
	C915065M	HP NOZZLE (15°ANGLE, TIP SIZE 65)			X				
	C915035M	HP NOZZLE (15°ANGLE, TIP SIZE 35)				X			X
	C915055M	HP NOZZLE (15°ANGLE, TIP SIZE 55)						X	
B	C915500MSS	LP DETERGENT NOZZLE		X	X	X	X	X	
Lance									
C	C4723.45.115	VARIO LANCE (NO NOZZLE REQUIRED)	X						
	C3924.01	684MM SS DOUBLE LANCE C/W BOOT		X	X	X	X	X	
	MPA40025800	S3-350 800MM SS SINGLE LANCE							X
Gun									
D	M4021108007	AL13 GUN WITH MELTED HANDLE & M22	X						
	M4022209003	AL55 GUN WITH MELTED HANDLE & M22		X	X	X	X	X	
	MPA30450010	5100 PSI RATED RL56 GUN							X
Hose									
E	AHW06M22X2X10	10 MTR HP HOSE (R2, 5800 PSI) M22	X	X	X	X	X	X	
	AHW06FB6X10	10 MTR HP HOSE (R2, 5800 PSI)							X
Unloader									
F	BAPRI20ADJ	UNLOADER VALVE (2000 PSI)	X						
	M215010400	VRT 3 UNLOADER VALVE (4000 PSI)		X	X				
	BVB350	UNLOADER VALVE (5100 PSI)				X	X	X	X
Thermal Dump Valve									
G	MPA60063050	3/8" THERMAL DUMP VALVE	X						
	MPA60063070	1/2" THERMAL DUMP VALVE		X	X	X	X	X	X
Safety Valves									
H	MTM00033003	3600 PSI SAFETY VALVE	X	X	X				
	MPA60156000	4000 PSI SAFETY VALVE				X	X	X	
	MPA60058000	VS 350 5650 PSI SAFETY VALVE							X
Inlet Strainer									
I	AYSTRAINER-200	1/2" FEMALE BRASS Y STRAINER	X	X					
	AY STRAINER 3/4	STRAINER 3/4"			X	X	X	X	X
Gauge									
J	AGCDR0102	6000 PSI GAUGE		X	X	X	X	X	X
Chemical Injector									
K	FZX1763	INJECTOR		X	X	X	X	X	X
Pumps									
L	BWBL1114	BERTOLINI PUMP (2000 PSI, 11 LPM)	X						
	BTTL1520	BERTOLINI PUMP (3000 PSI, 15 LPM)		X					
	BTTL2120	BERTOLINI PUMP (3000 PSI, 21 LPM)			X				
	BTTL1330	BERTOLINI PUMP (4000 PSI, 13 LPM)				X	X		
	BTTL2028	BERTOLINI PUMP (4000 PSI, 20 LPM)						X	
	BKTL1635	BERTOLINI PUMP (5000 PSI, 16 LPM)							X
Gearboxes									
M	B318699973	GEARBOX (3/4" PTO)	X						
	B318870973	GEARBOX (1" PTO)		X	X	X	X		
	B319110973	GEARBOX (1" PTO)						X	X
Wheel									
N	A400015	10" WHEEL	X						
	A400016	13" WHEEL (HONDA VERSIONS)		X	X	X		X	X
	A400016-HD	13" WHEEL (DIESEL VERSIONS)		X	X	X	X	X	X
Engine Mounts									
P	AENGMOUNTBB300	ENGINE MOUNTS (4 NEEDED)	X	X	X	X	X	X	X

Order the right part first time ...

specify the pump model number when ordering parts.

Full parts breakdown available online ... www.aussiepumps.com.au

Resetting the Safety Valve

A **pressure spike** will cause the safety valve to 'blow' to prevent damage to the pump seals.

A pressure spike is generally **caused by the unloader** for the following reasons.

1. Worn nozzles.

Worn nozzles, fitted in the end of the lance, result in less water bypassing back through the unloader to cool & lubricate it.

Without sufficient flow the unloader will overheat and wear. A drop in pressure on the gauge indicates nozzle wear. Replace worn nozzles.

2. Dirt in the unloader

may cause it to jam. Clean out unloader & check inlet filter fitted and clean.

3. Leaks in the system

can cause unloader 'chatter'. This will lead to the unloader wearing prematurely. All leaks must be fixed before using the machine.

The safety valve should only be reset after checks to ensure the

unloader valve is working correctly.

If in doubt contact, your nearest Aussie Eco-clean service centre.

The following steps should be taken to reset the safety valve, with the unit running.

1. Unscrew the lock nut (C) on the safety valve and the adjusting screw (D), should be screwed in all the way.

2. Using an allen key, loosen the lock nut (B) on the unloader and wind the unloader knob (A) in gradually until the required pressure is obtained whilst the trigger is pulled and water is running through the pump. Do not exceed the maximum rated pressure of the pump.

3. The lock nut (B) should then be wound down until it grounds out at the bottom (do not over tighten as this will further adjust the pressure) and locked with use of the allen key. Paint mark across the nut and knob to identify any

tampering with the setting.

4. With the pump running at the required pressure, the adjusting screw (D) on the safety valve should be wound out until there is a slight drip. Screw it in one quarter of a turn, or until the drip stops, this will set the safety valve 10% over the required pressure. The lock nut (C) should then be locked off. Paint mark to identify any tampering.

5. Repeat running with the trigger open and then closed two or three times to ensure safety valve

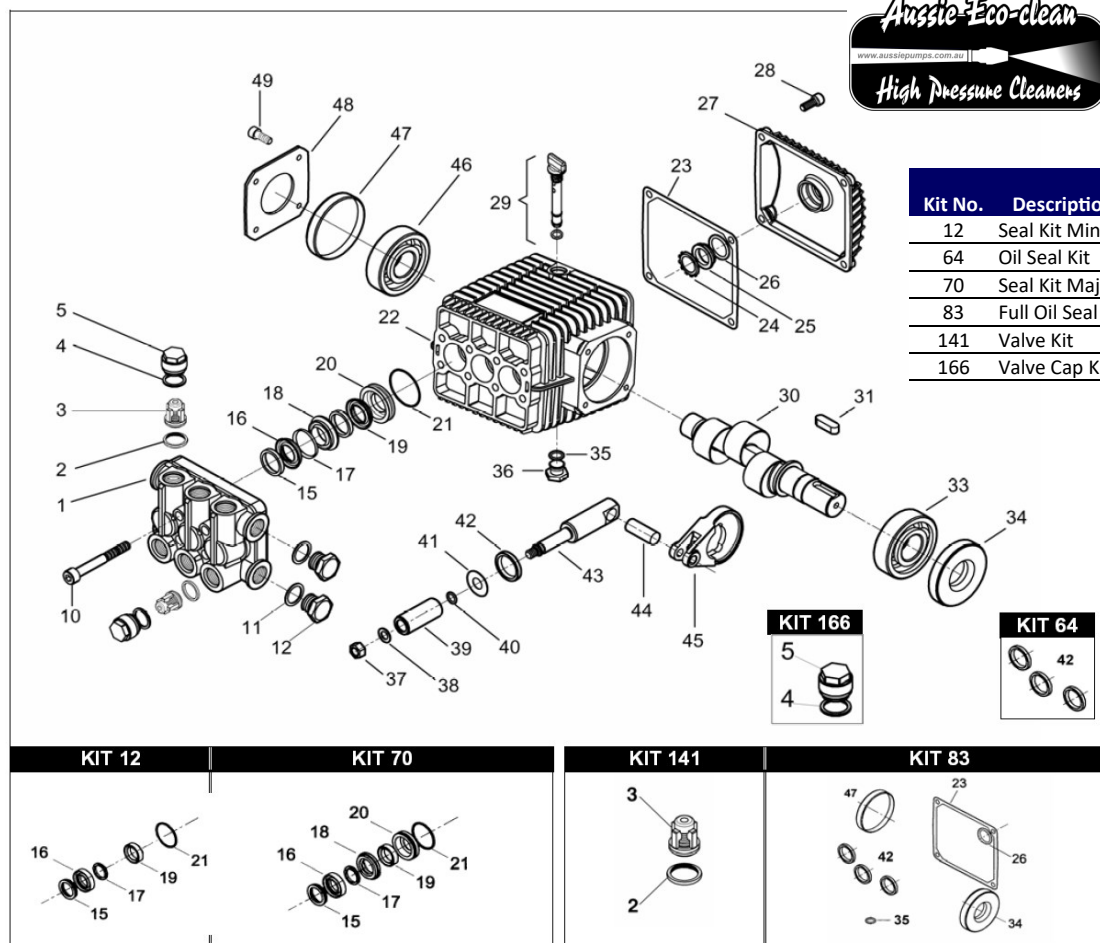
doesn't blow off pressure.

6. If safety valve continues to trip contact your nearest Aussie Eco-clean service centre.

This video demonstrates how to adjust the unloader and the safety valve (view online on Cold Water Blaster Spares page)



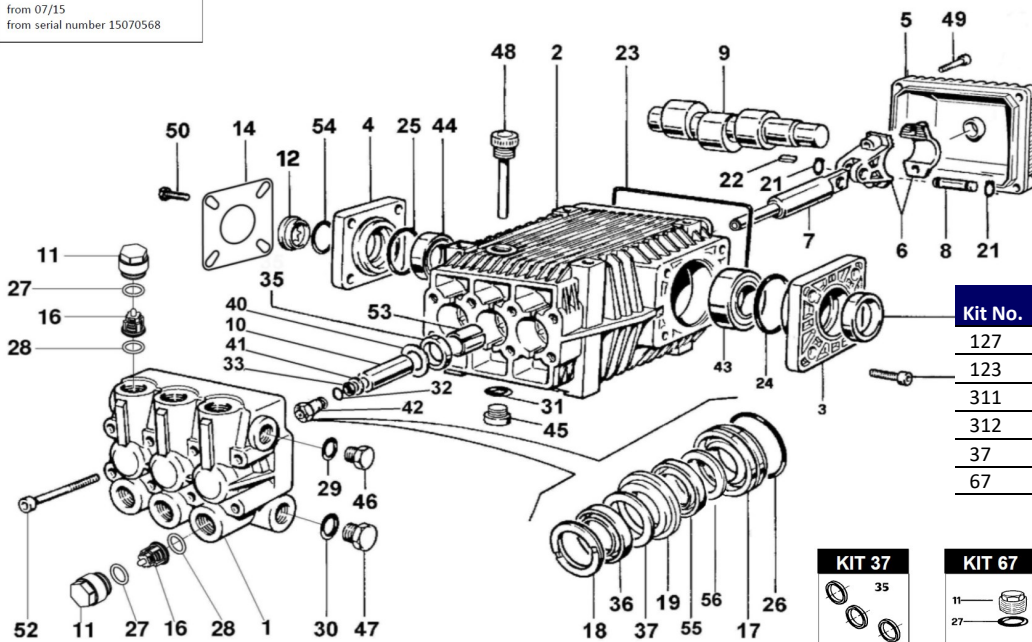
PUMP PARTS WBL1114 (Scud 100)



Kit No.	Description	Pieces
12	Seal Kit Minor	15
64	Oil Seal Kit	3
70	Seal Kit Major	21
83	Full Oil Seal Kit	8
141	Valve Kit	12
166	Valve Cap Kit	12

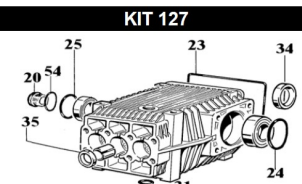
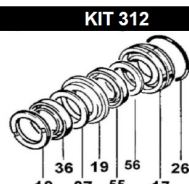
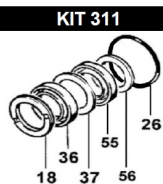
PUMP PARTS TTL 1520 TTL 2120 (Scud 350, Scud 351)

from 07/15
from serial number 15070568



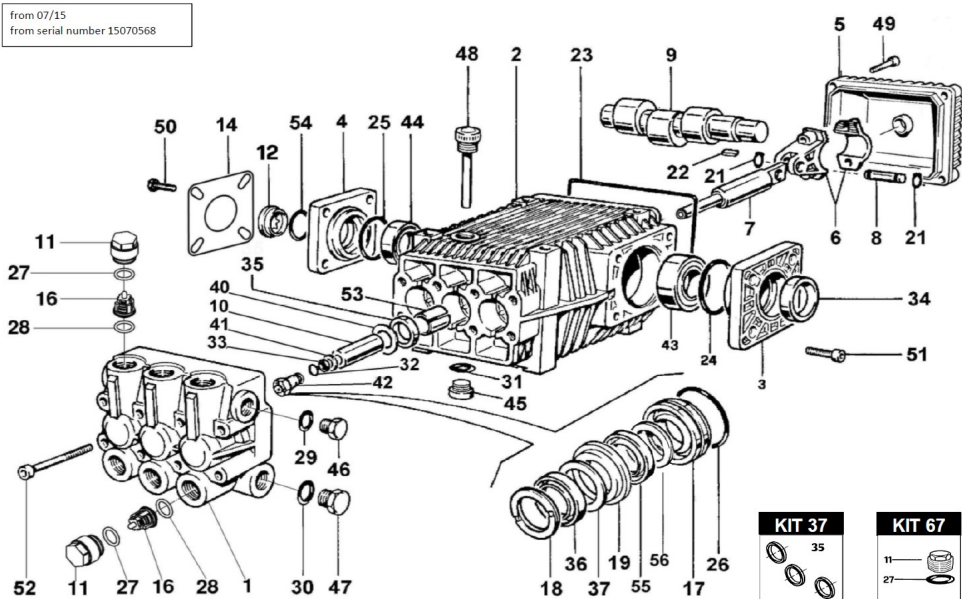
BERTOLINI
pumps
4 year warranty

Kit No.	Description	Pieces
127	Oil Seal & Sight Glass Kit	10
123	Valve Kit	12
311	Seal Kit Minor	18
312	Seal Kit Major	24
37	Oil Seal Kit	3
67	Valve cap kit	12



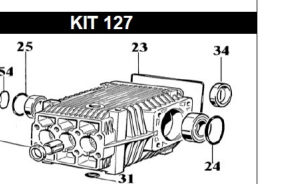
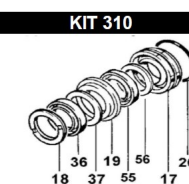
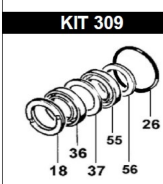
PUMP PARTS TTL1330 & TTL2028 (Scud 400 & Ultra A)

from 07/15
from serial number 15070568



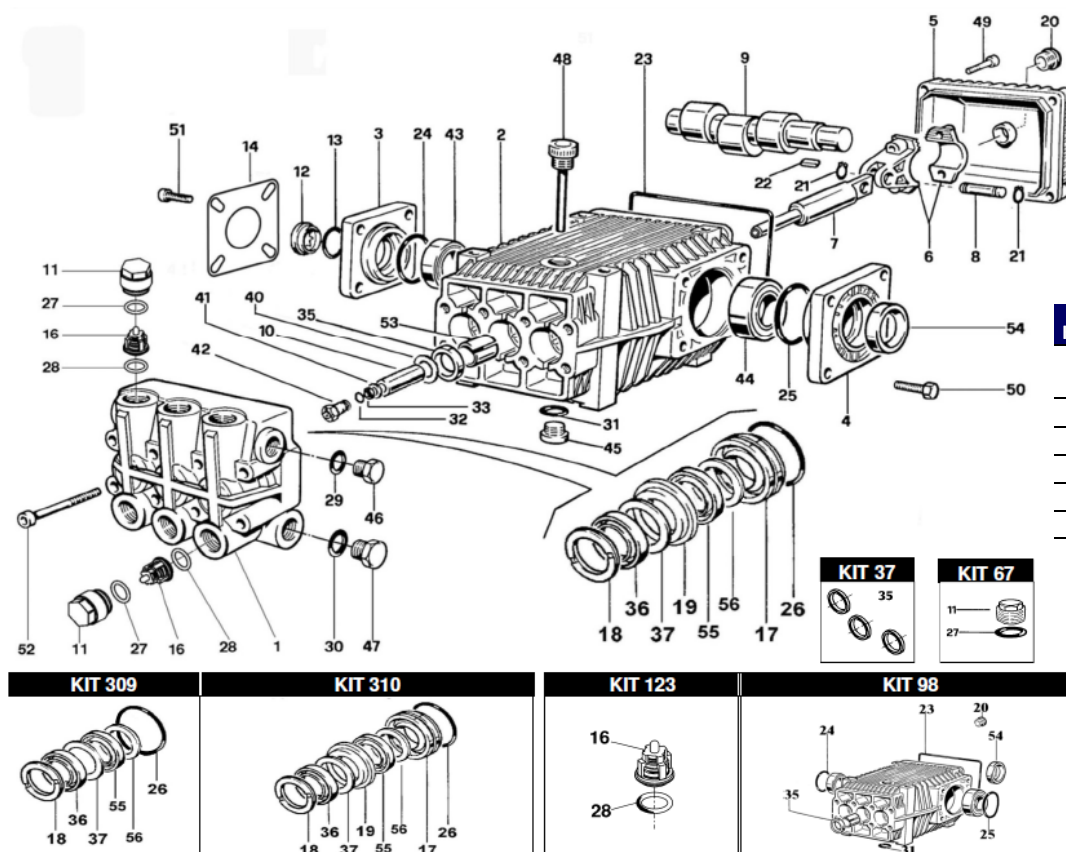
BERTOLINI
pumps
4 year warranty

Kit No.	Description	Pieces
127	Full Oil seal & Sight Glass kit	10
123	Valve Kit	12
309	Seal Kit Minor	18
310	Seal Kit Major	24
37	Oil Seal Kit	3
67	Valve cap kit	12



FREE pump service
guide available

PUMP PARTS KTL 1635 (Predator A)



BERTOLINI
pumps
4 year warranty

Kit No.	Description	Pieces
98	Oil Seal & Sight Glass Kit	9
123	Valve Kit	12
309	Seal Kit Minor	18
310	Seal Kit Major	24
37	Oil Seal Kit	3
67	Valve cap kit	12



SERVICE RECORD

Refer to page 16 for details of service schedule. A service record must be maintained to keep warranty valid.

Date	Description of work done	Signed